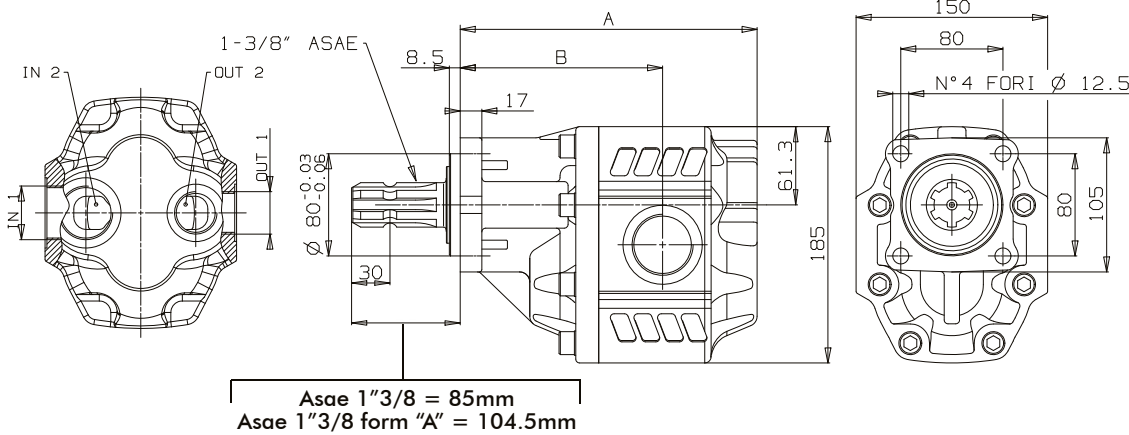


Orifices : aspiration et refoulement / latéraux et arrière  
De 63 à 150 cm<sup>3</sup>

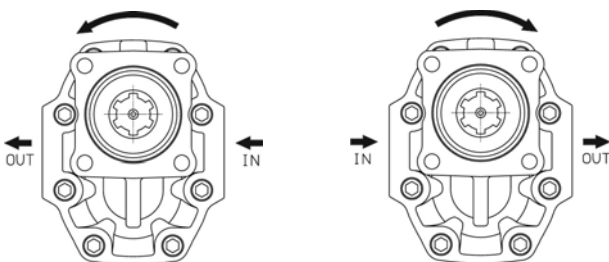


Asae 1"3/8 = 85mm  
Asae 1"3/8 form "A" = 104.5mm

| Type pompe | IN 1    | OUT 1  | A     | B     | Poids | Référence rotation droite | Référence rotation gauche |
|------------|---------|--------|-------|-------|-------|---------------------------|---------------------------|
|            | IN 2    | OUT 2  |       |       |       |                           |                           |
| ISO 228    |         |        | mm    |       | kg    |                           |                           |
| NPGH 63    |         |        | 186   | 121   | 19    | <b>105.062.00638</b>      | <b>105.062.00647</b>      |
| NPGH 73    | G1"     | G 3/4" | 190   | 125   | 21    | <b>105.062.00736</b>      | <b>105.062.00745</b>      |
| NPGH 84    | G1"1/4  | G1'    | 209,5 | 141   | 21,5  | <b>105.062.00843</b>      | <b>105.062.00852</b>      |
| NPGH 100   |         |        | 215,5 | 144,5 | 22    | <b>105.062.01002</b>      | <b>105.062.01011</b>      |
| NPGH 116   |         |        | 221,5 | 150,5 | 22,5  | <b>105.062.01164</b>      | <b>105.062.01173</b>      |
| NPGH 133   | G 1"1/2 |        | 227,5 | 153,5 | 23,5  | <b>105.062.01333</b>      | <b>105.062.01342</b>      |
| NPGH 150   |         |        | 232,5 | 158,5 | 24    | <b>105.062.01502</b>      | <b>105.062.01511</b>      |

435

**Identification aspiration / refoulement vue de face**



Rotation anti-horaire  
Pompe à gauche

Rotation horaire  
Pompe à droite

| Type pompe | Cyl. cm <sup>3</sup> | Pression (bar) |     |     | Vitesse maxi cont (tr/min) | Vitesse maxi int (tr/min) | Vitesse mini (tr/min) |
|------------|----------------------|----------------|-----|-----|----------------------------|---------------------------|-----------------------|
|            |                      | P1             | P2  | P3  |                            |                           |                       |
| NPGH 63    | 63,70                | 290            | 315 | 325 | 1800                       | 2700                      | 300                   |
| NPGH 73    | 74,87                | 280            | 300 | 315 |                            |                           |                       |
| NPGH 84    | 85,96                | 260            | 280 | 290 |                            |                           |                       |
| NPGH 100   | 102,60               | 250            | 270 | 280 | 1500                       | 2500                      |                       |
| NPGH 116   | 119,24               | 240            | 260 | 270 |                            |                           |                       |
| NPGH 133   | 135,88               | 220            | 250 | 260 |                            |                           |                       |
| NPGH 150   | 149,75               | 180            | 210 | 220 |                            |                           |                       |

P1 = Pression maxi continue (100%)  
P2 = Pression maxi intermittente (20 sec maxi)  
P3 = Pression de pointe maxi (6 sec maxi)